

Mitsubishi Estate Corporate Data

Corporate Information

(as of March 31, 2009, except where indicated)

Head Office

Otemachi Building, 6-1, Otemachi 1-chome, Chiyoda Ward
Tokyo 100-8133, Japan
Web site: http://www.mec.co.jp/index_e.html
Phone: +81-3-3287-5100

Date of Establishment

May 7, 1937

Paid-in Capital

¥141,373 million (as of April 30, 2009)

Number of Shares of Common Stock Issued

1,382,518,351 shares (see Note 1)

Number of Shareholders

68,482 (excluding shareholders with less than 1,502 shares)

Major Shareholders

	% of total
The Master Trust Bank of Japan, Ltd. (Trust Account)	5.65
Japan Trustee Services Bank, Ltd. (Trust Account 4G)	4.94
Japan Trustee Services Bank, Ltd. (Trust Account)	4.16
Meiji Yasuda Life Insurance Company	3.79
The Bank of Tokyo-Mitsubishi UFJ, Ltd.	3.12
State Street Bank and Trust Company	3.12
Tokio Marine & Nichido Fire Insurance Co., Ltd.	2.93
Taisei Corporation	2.10
The Chase Manhattan Bank, N.A. London S.L. Omnibus Account	1.75
Asahi Glass Co., Ltd.	1.64

Stock Exchange Listings

Tokyo Stock Exchange and other major Japanese stock exchanges

Transfer Agent and Registrar

Mitsubishi UFJ Trust and Banking Corporation
4-5, Marunouchi 1-chome, Chiyoda Ward, Tokyo 100-8212, Japan

Transfer Account Management Institution for Special Account

Mitsubishi UFJ Trust and Banking Corporation
4-5, Marunouchi 1-chome, Chiyoda Ward, Tokyo 100-8212, Japan

Transfer Account Management Institution for Special Account established for shareholders of the former Towa Real Estate Development Co., Ltd. (see Note 2)

The Chuo Mitsui Trust and Banking Company, Limited
33-1, Shiba 3-chome, Minato Ward, Tokyo 105-0014, Japan

Auditor

Ernst & Young ShinNihon LLC

Notes:

- In line with the Share Exchange that resulted in Towa Real Estate Development Co., Ltd. ("Towa") becoming a wholly owned subsidiary, a total of 7,878,746 shares were newly issued on the effective date of April 30, 2009. This increase brings the number of outstanding shares of Mitsubishi Estate, the parent company, to 1,390,397,097 shares.
- As part of the Share Exchange agreement with Towa effective April 30, 2009, Mitsubishi Estate is maintaining its position associated with the special account established by Towa when the electronic share certificate system was enacted. Consequently, The Chuo Mitsui Trust & Banking Co., Ltd. will retain its position as the transfer account management institution for the special account established for the former Towa's shareholders.

Mitsubishi Estate Group

Building Business	
Building Leasing Business	<ul style="list-style-type: none"> Sunshine BS Corporation Sunshine Enterprise Corporation Yokohama Sky Building Co., Ltd. Tokyo Kotsu Kaikan Co., Ltd. Chelsea Japan Co., Ltd.
Building Management Business	<ul style="list-style-type: none"> Parking Business Grand Parking Center Co., Ltd. Tokyo Garage Co., Ltd. District Heating and Cooling Business Marunouchi Heat Supply Co., Ltd.
<ul style="list-style-type: none"> Mitsubishi Estate Building Management Co., Ltd. Mitsubishi Jisho Retail Property Management Co., Ltd. Mitsubishi Jisho Property Management Co., Ltd. Hokuryo City Service Co., Ltd. IMS Co., Ltd. Yuden Building Kanri Co., Ltd. 	<ul style="list-style-type: none"> Ikebukuro District Heating and Cooling Co., Ltd. O.A.P. D.H.C. Supply Co., Ltd. Minato Mirai 21 D.H.C. Co., Ltd. Others Marunouchi Direct Access Limited Marunouchi Hotel Co., Ltd.

Residential Business	
Real Estate Sales	<ul style="list-style-type: none"> MEC Urban Resort Tohoku Co., Ltd. Towa Real Estate Development Co., Ltd. Towa Nasu Resort Co.
Residence Management Business	<ul style="list-style-type: none"> Sakura Golf Development Co., Ltd. Others MEC Eco LIFE Co., Ltd. Ryoei Life Service Co., Ltd. Towa Real Estate Brokerage Co., Ltd. Tsunagu Network Communications, Inc.
<ul style="list-style-type: none"> Izumi Park Town Service Co., Ltd. Mitsubishi Jisho Towa Community Co., Ltd. MT Community Staff Co., Ltd. Higashinohon Kaihatsu Co., Ltd. 	

Urban Development & Investment Management	
<ul style="list-style-type: none"> Mitsubishi Jisho Investment Advisors, Inc. Japan Real Estate Asset Management Co., Ltd. Ascott International Management Japan Co., Ltd. 	

International Business	
<ul style="list-style-type: none"> Rockefeller Group, Inc. (RGI) Mitsubishi Estate New York Inc. MEC UK Limited Mitsubishi Estate Asia Pte. Ltd. 	

Architectural Design & Engineering	
<ul style="list-style-type: none"> Mitsubishi Jisho Sekkei Inc. MEC Design International Corporation 	

Custom-Built Housing	
<ul style="list-style-type: none"> Mitsubishi Estate Home Co., Ltd. Mitsubishi Estate Housing Components Co., Ltd. 	

Hotel Business	
<ul style="list-style-type: none"> Royal Park Hotels and Resorts Co., Ltd. Royal Park Inn Nagoya Co., Ltd. Tohoku Royal Park Hotel Co., Ltd. Royal Park Shiodome Tower Co., Ltd. Yokohama Royal Park Hotel Co., Ltd. Royal Park Hotel Co., Ltd. 	

Real Estate Services	
<ul style="list-style-type: none"> Mitsubishi Real Estate Services Co., Ltd. 	

Others	
<ul style="list-style-type: none"> MEC Information Development Co., Ltd. MEC Human Resources, Inc. Keiyo Tochi Kaihatsu Co., Ltd. 	

- Consolidated subsidiary
- Equity-method affiliate

Directors, Statutory Auditors and Executive Officers (As of June 26, 2009)

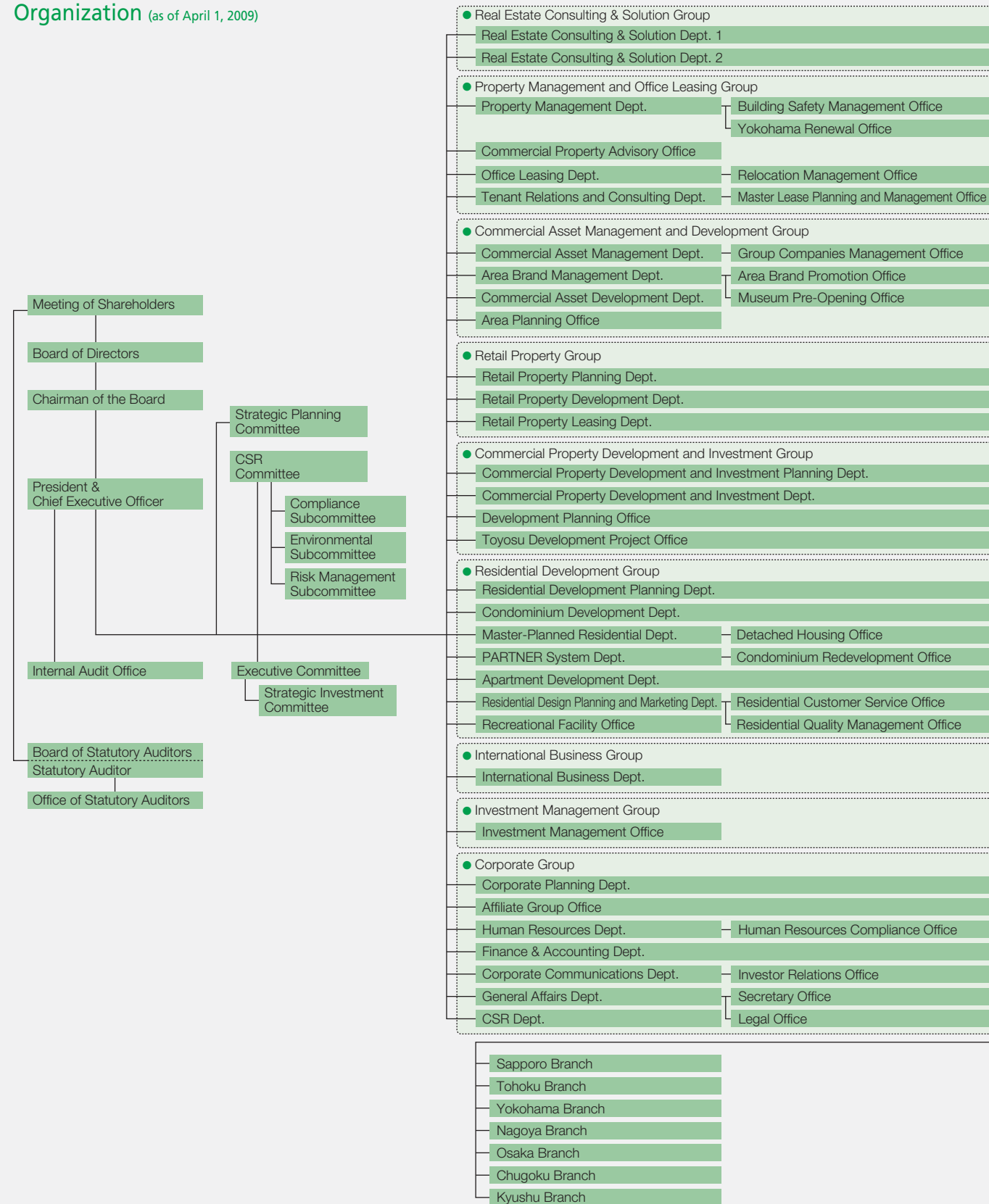
Directors and Statutory Auditors	
President & Representative Director	Keiji Kimura
Representative Director	Nobuyuki Iizuka
Representative Director	Toshio Nagashima
Representative Director	Hiroshi Danno
Representative Director	Takaya Endo
Representative Director	Masaaki Kono
Representative Director	Hiroyoshi Ito
Director	Yutaka Yanagisawa
Director	Hiroataka Sugiyama
Director & Executive Counsel	Shigeru Takagi
Director (see Note 1)	Isao Matsushashi
Director (see Note 1)	Fumikatsu Tokiwa
Director (see Note 1)	Yasumasa Gomi
Director (see Note 1)	Shu Tomioka
Standing Statutory Auditor	Eiji Tan
Standing Statutory Auditor (see Note 2)	Kazuhiko Hasegawa
Statutory Auditor (see Note 2)	Kenjiro Hata
Statutory Auditor (see Note 2)	Akio Utsumi

Notes:




- Among directors, Isao Matsushashi, Fumikatsu Tokiwa, Yasumasa Gomi and Shu Tomioka are outside directors who fulfill the qualifications set forth under Article 2-15 of the Corporation Law of Japan.
- Among statutory auditors, Kazuhiko Hasegawa, Kenjiro Hata and Akio Utsumi are outside auditors who fulfill the qualifications set forth under Article 2-16 of the Corporation Law of Japan.



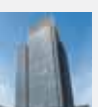

Executive Officers	
Chief Executive Officer	Keiji Kimura
Deputy President	Nobuyuki Iizuka
Executive Vice President	Toshio Nagashima
Executive Vice President	Hiroshi Danno
Executive Vice President	Takaya Endo
Executive Vice President	Seiichiro Suzuki
Executive Vice President	Toyohisa Miyauchi
Executive Vice President	Masaaki Kono
Executive Vice President	Takao Yagihashi
Executive Vice President	Hiroyoshi Ito
Senior Executive Officer	Yutaka Yanagisawa
Senior Executive Officer	Yuzuru Shibagaki
Senior Executive Officer	Hiroshi Nakajima
Senior Executive Officer	Masao Ouchi
Senior Executive Officer	Hiroataka Sugiyama
Senior Executive Officer	Toshihiko Kazama
Executive Officer	Yasuo Fujiwara
Executive Officer	Ichiro Watarai
Executive Officer	Megumu Ono
Executive Officer	Shiro Fujisawa
Executive Officer	Masamichi Ono
Executive Officer	Soichiro Hayashi
Executive Officer	Jo Kato
Executive Officer	Naoto Aiba
Executive Officer	Takao Tojo
Executive Officer	Koji Kiyosawa
Executive Officer	Masao Toyozumi
Executive Officer	Kazuyuki Yabu
Executive Officer	Kenichi Iwata
Executive Officer	Atsuo Kyono

Organization (as of April 1, 2009)



Corporate History

1890	March	The Marunouchi site (over 353,000m ²)—a former military training ground known as Kanda Misaki-cho—purchased by Mitsubishi Company from the Japanese government
	September	Marunouchi Architectural Office established
1893	December	Mitsubishi Goshi Kaisha (limited partnership) established
1894	June	Mitsubishi Ichigokan, the first office building in Marunouchi, completed
		 Mitsubishi Ichigokan
1906	July	Real Estate Division established within Mitsubishi Goshi Kaisha
1923	February	Marunouchi Building completed
		 Marunouchi Building
1937	May	Mitsubishi Estate Company, Limited established with paid-in capital totaling ¥15 million, with the ownership of the Marunouchi Building and its site, as well as business rights for buildings and land within the Marunouchi area, transferred from Mitsubishi Goshi Kaisha
	November	Construction-related businesses of Mitsubishi Goshi Kaisha transferred to Mitsubishi Estate
1945	April	Ownership of Yaesu Building (completed in March 1928 and renamed Marunouchi Yaesu Building in 1962) and its site transferred from Mitsubishihisha Co., Ltd. to Mitsubishi Estate
1950	January	Business rights for the Marunouchi site and other land and buildings, excluding those for Marunouchi Building and Yaesu Building, were returned to Mitsubishihishonsha Co., Ltd. Mitsubishihishonsha Co., Ltd. dissolved and its operations transferred to two newly established secondary corporations, Yowa Fudosan Ltd. and Kaito Fudosan Ltd.
1952	May	Mr. Takejiro Watanabe appointed president
	November	Shin-Marunouchi Building completed
1953	April	Yowa Fudosan and Kaito Fudosan merged with Mitsubishi Estate
	May	Mitsubishi Estate's shares listed on the Tokyo Stock Exchange and the Osaka Securities Exchange
1959	July	Marunouchi Remodeling Plan formulated
1960	February	Marunouchi Parking Area completed
1962	December	Hokkaido Building completed
1969	May	Mr. Otokazu Nakata and Mr. Takejiro Watanabe appointed president and chairman, respectively
		Akasaka Park House offered for sale in lots, marking the launch of the Condominium Business
1972	April	Mitsubishi Estate New York Inc. established
	June	The first phase of the Izumi Park Town Project launched
		 Izumi Park Town
	December	Mitsubishi Real Estate Services Co., Ltd. established
1973	November	Branches established in Sapporo, Sendai, Nagoya and Osaka
1975	May	Semiannual settlement of accounts changed to annual
1978	October	Shin Aoyama Building completed
1980	June	Mr. Tatsuji Ito and Mr. Otokazu Nakata appointed president and chairman, respectively
1981	October	Hibiya Kokusai Building completed
1983	April	Nagoya Dai-ichi Hotel opened (renamed Royal Park Inn Nagoya in April 2001)
	November	MEC USA, Inc. established
1984	July	Mitsubishi Estate Home Co., Ltd. established
1986	March	MEC UK Limited established
	July	The first consolidated financial statements announced
	October	Yokohama Office established (reorganized as Yokohama Branch in April 2000)

1987	June	Mr. Jotaro Takagi appointed president
1988	January	Yokohama Minato Mirai 21 Block-25 Development Plan announced
1989	April	Tenjin MM Building (IMS) opened in Fukuoka City
	June	Royal Park Hotel in Hakozaki, Tokyo opened
	July	Hiroshima Park Building completed
	July	Hiroshima Branch (renamed Chugoku Branch in April 2000) and Kyushu Branch established
1990	February	Participation in the City of London's Paternoster Square Project announced
	April	Capital investment in the Rockefeller Group, Inc. initiated
	September	Construction of Ryokuendai New Town commenced
1993	July	Akasaka Park Building completed
	September	Yokohama Landmark Tower completed
		 Yokohama Landmark Tower
1994	June	Mr. Takeshi Fukuzawa and Mr. Jotaro Takagi appointed as president and chairman, respectively
1995	November	Reconstruction of Marunouchi Building announced
1996	January	Osaka Amenity Park (OAP) completed
	November	Head Office relocated to Tokyo Building
1999	April	Reconstruction of Marunouchi Building commenced
2000	April	Aqua City Odaiba commercial complex opened under the management of Mitsubishi Estate subsidiary Aqua City Co., Ltd. (renamed Mitsubishi Jisho Retail Property Management Co., Ltd. in July 2007)
	November	Royal Park Hotels and Resorts Co., Ltd. established
2001	April	Mr. Shigeru Takagi and Mr. Takeshi Fukuzawa appointed president and chairman, respectively
	June	Mitsubishi Jisho Sekkei Inc. established through a spin-off of the architectural design and engineering business
	September	Mitsubishi Jisho Investment Advisors, Inc. established
2002	March	Properties and equipment revaluated in accordance with the Law Concerning Revaluation of Land and other relevant laws and regulations
	September	Marunouchi Building opened (completed in August)
		 Marunouchi Building
2003	February	Mitsubishi Trust and Banking Building completed (renamed Mitsubishi UFJ Trust and Banking Building in October 2005)
	March	Head Office relocated to Otemachi Building
	April	Introduction of an executive officer system
	May	Paternoster Square completed in the City of London
	July	Royal Park Shiodome Tower opened
2004	September	Marunouchi OAZO opened (completed in August)
	December	Capital investment in Towa Real Estate Development Co., Ltd. initiated
2005	March	Construction of Shin-Marunouchi Building commenced
	June	Mr. Keiji Kimura appointed president
	November	Tokyo Building opened (completed in October)
2007	April	Shin-Marunouchi Building opened
	September	The Peninsula Tokyo opened (completed in May)
		 Shin-Marunouchi Building
2008	January	Towa Real Estate Development turned into a Mitsubishi Estate consolidated subsidiary
	March	Sunshine City Corporation turned into a Mitsubishi Estate consolidated subsidiary
	October	Mitsubishi Estate Asia Pte. Ltd. commenced operations
2009	March	Chelsea Japan Co., Ltd. turned into a Mitsubishi Estate consolidated subsidiary
	April	Towa Real Estate Development turned into a Mitsubishi Estate wholly owned subsidiary
	April	Marunouchi Park Building & Mitsubishi Ichigokan completed
		 Marunouchi Park Building & Mitsubishi Ichigokan