

Mitsubishi Estate Corporate Data

Corporate Information

Head Office

Otemachi Building, 6-1, Otemachi 1-chome, Chiyoda-ku,
Tokyo 100-8133, Japan

Web site: <http://www.mec.co.jp/>

Phone: (03) 3287-5100

Date of Establishment

May 7, 1937

Paid-in Capital

¥136,534 million

Number of Shares of Common Stock Issued

1,382,518,351 shares

Number of Shareholders

67,997 (excluding shareholders with less than 1,502 shares)

Major Shareholders

	% of total
State Street Bank and Trust Company	5.40
The Master Trust Bank of Japan, Ltd. (Trust Account)	4.87
Meiji Yasuda Life Insurance Company	3.79
Japan Trustee Services Bank, Ltd. (Trust Account)	3.38
The Bank of Tokyo-Mitsubishi UFJ, Ltd.	3.12
Tokio Marine & Nichido Fire Insurance Co., Ltd.	2.93
State Street Bank and Trust Company 505103	2.29
Taisei Corporation	2.10
Takenaka Corporation	2.03
Asahi Glass Co., Ltd.	1.64

Major Consolidated Subsidiaries

Mitsubishi Real Estate Services Co., Ltd.

Mitsubishi Estate Home Co., Ltd.

Mitsubishi Jisho Sekkei Inc.

Royal Park Hotels and Resorts Co., Ltd.

Mitsubishi Estate Building Management Co., Ltd.

Mitsubishi Jisho Towa Community Co., Ltd.

Marunouchi Heat Supply Co., Ltd.

Sunshine City Corporation

Royal Park Hotel Co., Ltd.

Rockefeller Group, Inc.

Stock Exchange Listings

Tokyo Stock Exchange and other major Japanese stock exchanges

Transfer Agent and Registrar

Mitsubishi UFJ Trust and Banking Corporation 4-5,

Marunouchi 1-chome, Chiyoda-ku, Tokyo 100-8212, Japan

Auditor

Ernst & Young ShinNihon

(As of March 31, 2008)

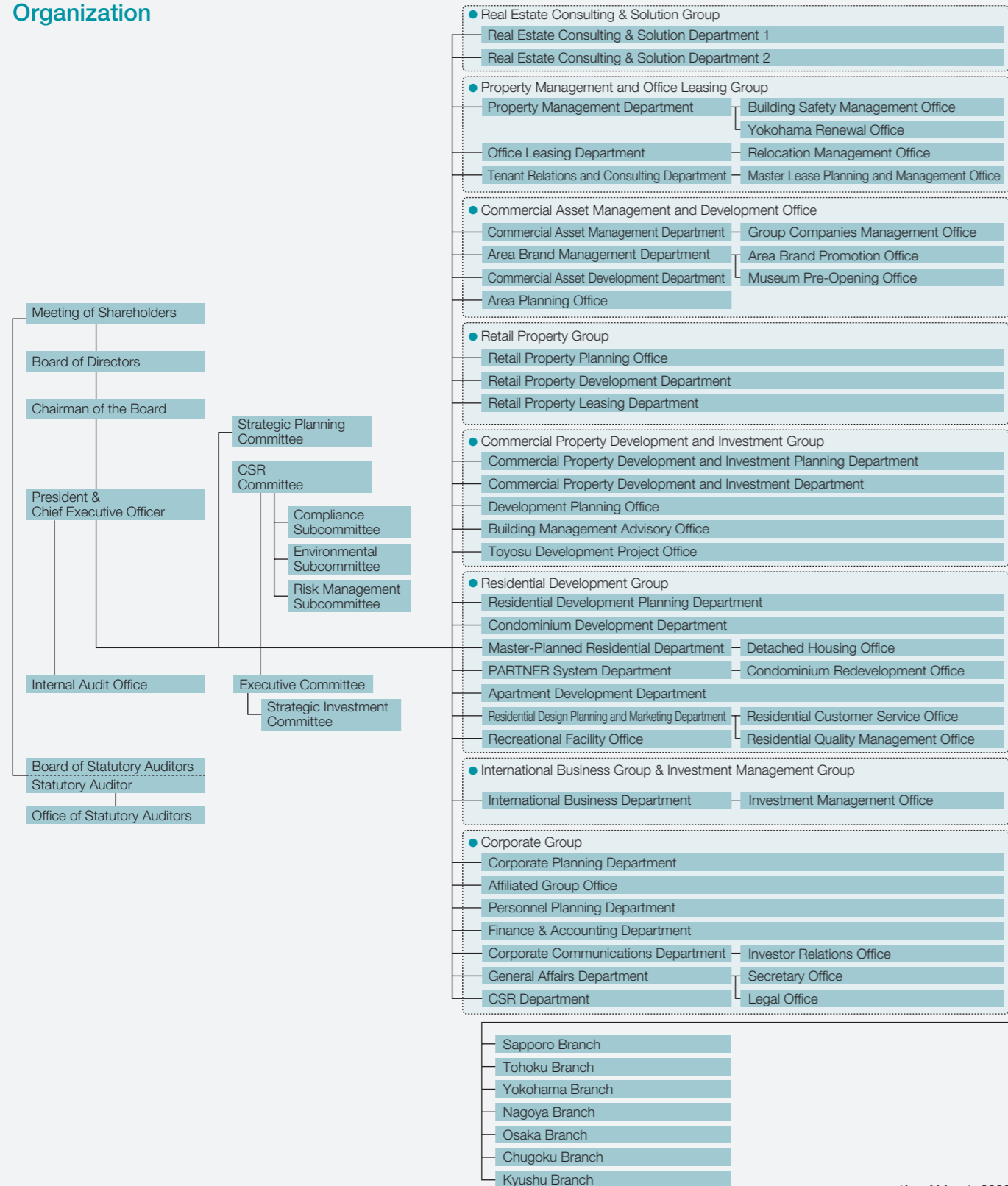
Directors, Statutory Auditors, and Executive Officers

Directors and Statutory Auditors		Executive Officers	
President & Representative Director	Keiji Kimura	Chief Executive Officer	Keiji Kimura
Representative Director	Nobuyuki Iizuka	Deputy President	Nobuyuki Iizuka
Representative Director	Toshio Nagashima	Executive Vice President	Toshio Nagashima
Representative Director	Hiroshi Danno	Executive Vice President	Hiroshi Danno
Representative Director	Takaya Endo	Executive Vice President	Takaya Endo
Representative Director	Seiichiro Suzuki	Executive Vice President	Seiichiro Suzuki
Director & Executive Counsel	Shigeru Takagi	Executive Vice President	Toyohisa Miyauchi
Director	Hiroyoshi Ito	Executive Vice President	Masaaki Kono
Director	Hiroataka Sugiyama	Executive Vice President	Takao Yagihashi
Director	Isao Matsuhashi	Senior Executive Officer	Hiroyoshi Ito
Director	Fumikatsu Tokiwa	Senior Executive Officer	Yutaka Yanagisawa
Director	Kazuya Okamoto	Senior Executive Officer	Yuzuru Shibagaki
Director	Shu Tomioka	Senior Executive Officer	Hiroshi Nakajima
Standing Statutory Auditor	Eiji Tan	Senior Executive Officer	Masao Ouchi
Standing Statutory Auditor	Kazuhiko Hasegawa	Senior Executive Officer	Hiroataka Sugiyama
Statutory Auditor	Kenjiro Hata	Executive Officer	Toshihide Yoshimura
Statutory Auditor	Akio Utsumi	Executive Officer	Kazuo Takahashi
		Executive Officer	Yasuo Fujiwara
		Executive Officer	Ichiro Watarai
		Executive Officer	Megumu Ono
		Executive Officer	Toshihiko Kazama
		Executive Officer	Yoshikazu Fukasawa
		Executive Officer	Shiro Fujisawa
		Executive Officer	Masamichi Ono
		Executive Officer	Soichiro Hayashi
		Executive Officer	Jo Kato
		Executive Officer	Naoto Aiba
		Executive Officer	Takao Tojo
		Executive Officer	Koji Kiyosawa

Notes:

1. Among directors, only Isao Matsuhashi, Fumikatsu Tokiwa, Kazuya Okamoto, and Shu Tomioka fulfill the qualifications necessary for outside director as stipulated in Article 2-15 of the Corporation Law of Japan.
2. Among statutory auditors, only Kazuhiko Hasegawa, Kenjiro Hata, and Akio Utsumi fulfill the qualifications necessary for outside statutory auditor as stipulated in Article 2-16 of the Corporation Law of Japan.

Organization



(As of May 1, 2008)

Mitsubishi Estate Group

Building Business
Building Leasing Business
<ul style="list-style-type: none"> Sunshine City Corporation Yokohama Sky Building Co., Ltd. Tokyo Kotsu Kaikan Co., Ltd. Chelsea Japan Co., Ltd.
Building Management Business
<ul style="list-style-type: none"> Mitsubishi Estate Building Management Co., Ltd. Mitsubishi Jisho Retail Property Management Co., Ltd. MEC Building Facilities Co., Ltd. Mitsubishi Jisho Property Management Co., Ltd. Yuden Building Kanri Co., Ltd. Hokuryo City Service Co., Ltd. IMS Co., Ltd. Sunshine BS Corporation O.A.P. Management Co., Ltd.
Parking Business
<ul style="list-style-type: none"> Grand Parking Center Co., Ltd. Tokyo Garage Co., Ltd.
District Heating and Cooling Business
<ul style="list-style-type: none"> Marunouchi Heat Supply Co., Ltd. Ikebukuro District Heating and Cooling Co., Ltd. O.A.P. D.H.C. Supply Co., Ltd. Minato Mirai 21 D.H.C Co., Ltd.
Others
<ul style="list-style-type: none"> Marunouchi Direct Access Limited Marunouchi Hotel Co., Ltd.
Residential Business
Real Estate Sales
<ul style="list-style-type: none"> TOWA REAL ESTATE DEVELOPMENT CO., LTD.
Residence Management Business
<ul style="list-style-type: none"> Izumi Park Town Service Co., Ltd. Mitsubishi Jisho Towa Community Co., Ltd. MT Community Staff Co., Ltd.
Recreational Facilities
<ul style="list-style-type: none"> Higashinohon Kaihatsu Co., Ltd. MEC Urban Resort Tohoku Co., Ltd. Sakura Golf Development Co., Ltd.
Others
<ul style="list-style-type: none"> Ryoei Life Service Co., Ltd. Tsunagu Network Communications, Inc.

Urban Development & Investment Management
<ul style="list-style-type: none"> Mitsubishi Jisho Investment Advisors, Inc. Ascott International Management Japan Co., Ltd. Japan Real Estate Asset Management Co., Ltd.
International Business
<ul style="list-style-type: none"> Rockefeller Group, Inc. (RGI) Mitsubishi Estate New York Inc. MEC UK Limited
Architectural Design & Engineering
<ul style="list-style-type: none"> Mitsubishi Jisho Sekkei Inc. MEC Design International Corporation
Custom-Built Housing
<ul style="list-style-type: none"> Mitsubishi Estate Home Co., Ltd. Mitsubishi Estate Housing Components Co., Ltd.
Hotel Business
<ul style="list-style-type: none"> Royal Park Hotels and Resorts Co., Ltd. Yokohama Royal Park Hotel Co., Ltd. Royal Park Inn Nagoya Co., Ltd. Tohoku Royal Park Hotel Co., Ltd. Royal Park Shiodome Tower Co., Ltd. Royal Park Hotel Co., Ltd.
Real Estate Services
<ul style="list-style-type: none"> Mitsubishi Real Estate Services Co., Ltd.
Others
<ul style="list-style-type: none"> Shiki Resorts Co., Ltd. Shiki Club Links Co., Ltd. MEC Human Resources, Inc. Keiyo Tochi Kaihatsu Co., Ltd.

- Consolidated Subsidiaries
- Equity-Method Affiliates