

## Corporate Information

### Head Office:

Otemachi Building, 6-1, Otemachi 1-chome, Chiyoda-ku, Tokyo 100-8133, Japan

Web site: <http://www.mec.co.jp>

Phone: (03) 3287-5100

### Date of Establishment:

May 7, 1937

### Paid-in Capital:

¥136,534 million

### Number of Shares of Common Stock Issued:

1,382,518,351 shares

### Number of Shareholders:

69,499 (excluding shareholders with less than 1,000 shares)

### Major Shareholders:

	% of total
The Master Trust Bank of Japan, Ltd. (Trust Account)	5.09
Meiji Yasuda Life Insurance Company	4.15
State Street Bank and Trust Company	4.11
Japan Trustee Services Bank, Ltd. (Trust Account)	3.70
The Bank of Tokyo-Mitsubishi UFJ, Ltd.	3.13
Tokio Marine & Nichido Fire Insurance Co., Ltd.	2.94
State Street Bank and Trust Company 505103	2.41
Taisei Corporation	2.11
Takenaka Corporation	2.04
Asahi Glass Co., Ltd.	1.64

### Major Consolidated Subsidiaries:

Mitsubishi Real Estate Services Co., Ltd.

Mitsubishi Estate Home Co., Ltd.

Mitsubishi Jisho Sekkei Inc.

Yokohama Royal Park Hotel Co., Ltd.

Mitsubishi Estate Building Management Co., Ltd.

Mitsubishi Jisho Towa Community Co., Ltd.

Marunouchi Heat Supply Co., Ltd.

Yokohama Sky Building Co., Ltd.

Royal Park Hotel Co., Ltd.

Rockefeller Group, Inc.

### Stock Exchange Listings:

Tokyo Stock Exchange and other major Japanese stock exchanges

### Transfer Agent and Registrar:

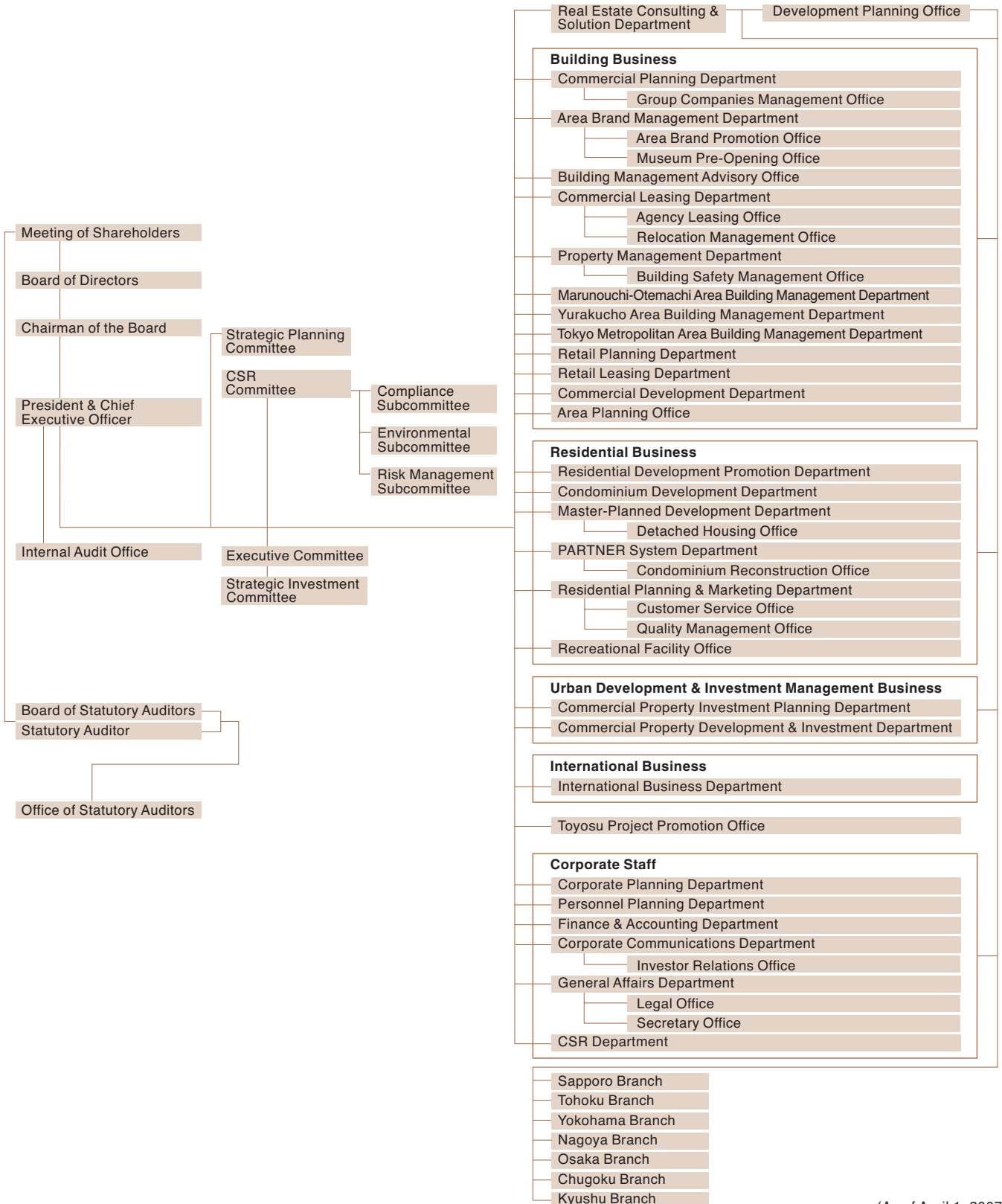
Mitsubishi UFJ Trust and Banking Corporation 4-5, Marunouchi 1-chome, Chiyoda-ku, Tokyo 100-8212, Japan

### Auditor:

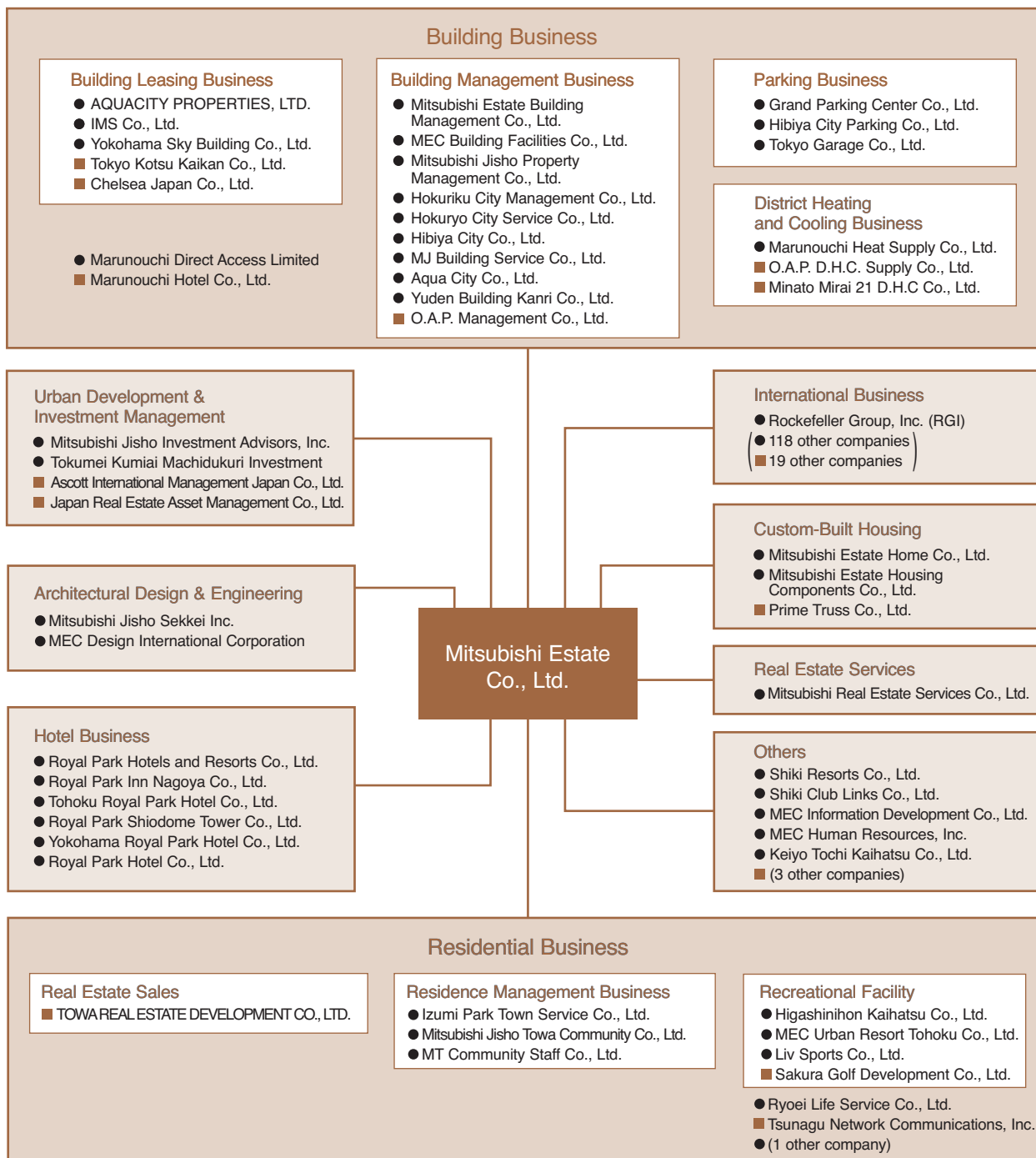
Ernst & Young ShinNihon

(As of March 31, 2007)

# Organization



(As of April 1, 2007)



**Residential Business**

**Real Estate Sales**

- TOWAREALESTATE DEVELOPMENT CO., LTD.

**Residence Management Business**

- Izumi Park Town Service Co., Ltd.
- Mitsubishi Jisho Towa Community Co., Ltd.
- MT Community Staff Co., Ltd.

**Recreational Facility**

- Higashinohon Kaihatsu Co., Ltd.
- MEC Urban Resort Tohoku Co., Ltd.
- Liv Sports Co., Ltd.
- Sakura Golf Development Co., Ltd.

● Ryohei Life Service Co., Ltd.

■ Tsunagu Network Communications, Inc.

● (1 other company)

● Consolidated Subsidiaries  
 ■ Equity-Method Affiliates

(As of April 1, 2007)





Otemachi Building, 6-1, Otemachi 1-chome,  
Chiyoda-ku, Tokyo 100-8133, Japan  
<http://www.mec.co.jp>

