

mitsubishi estate corporate data

DIRECTORS AND STATUTORY AUDITORS

Chairman of the Board

Takeshi Fukuzawa

President & Representative Director

Keiji Kimura

Representative Directors

Nobuyuki Iizuka

Satoshi Oyama

Toshio Nagashima

Hiroshi Danno

Director & Executive Counsel

Shigeru Takagi

Directors

Seiichiro Suzuki

Fumikatsu Tokiwa

Kazuya Okamoto

Shu Tomioka

Standing Statutory Auditors

Eiji Tan

Kunihiro Inoue

Statutory Auditors

Kenjiro Hata

Toyoshi Nakano

EXECUTIVE OFFICERS

Chief Executive Officer

Keiji Kimura

Deputy President

Nobuyuki Iizuka

Executive Vice Presidents

Takayuki Hara

Terutake Miyamoto

Kazuo Odagawa

Hiroharu Koinuma

Satoshi Oyama

Toshio Nagashima

Hiroshi Danno

Senior Executive Officers

Takaya Endo

Seiichiro Suzuki

Mitsuo Iwai

Toyohisa Miyauchi

Masaaki Kono

Takao Yagihashi

Hiroyoshi Ito

Yutaka Yanagisawa

Yuzuru Shibagaki

Executive Officers

Toshihide Yoshimura

Kazuo Takahashi

Hiroshi Nakajima

Masao Ouchi

Hiroataka Sugiyama

Yasuo Fujiwara

Ichiro Watarai

Megumu Ono

Toshihiko Kazama

Yoshikazu Fukasawa

(As of June 29, 2006)

CORPORATE INFORMATION

Head Office:

Otemachi Building, 6-1, Otemachi 1-chome, Chiyoda-ku, Tokyo 100-8133, Japan

Web site: <http://www.mec.co.jp>

Phone: (03) 3287-5100

Date of Establishment:

May 7, 1937

Paid-in Capital:

¥129,736 million

Number of Shares of Common Stock Issued:

1,371,189,197 shares

Number of Shareholders:

78,169 (excluding shareholders with less than 1,000 shares)

Major Shareholders:

	% of total
The Master Trust Bank of Japan, Ltd. (Trust Account)	4.96
State Street Bank and Trust Company	4.59
Meiji Yasuda Life Insurance Company	4.19
Japan Trustee Services Bank, Ltd. (Trust Account)	3.56
The Bank of Tokyo-Mitsubishi UFJ, Ltd.	3.16
Tokio Marine & Nichido Fire Insurance Co., Ltd.	2.96
State Street Bank and Trust Company 505103	2.59
Taisei Corporation	2.13
Takenaka Corporation	2.05
Asahi Glass Co., Ltd.	1.66

Major Consolidated Subsidiaries:

Mitsubishi Real Estate Services Co., Ltd.
Mitsubishi Estate Home Co., Ltd.
Mitsubishi Jisho Sekkei Inc.
Yokohama Royal Park Hotel Co., Ltd.
Mitsubishi Estate Building Management Co., Ltd.
Marunouchi Heat Supply Co., Ltd.
Yokohama Sky Building Co., Ltd.
Royal Park Hotel Co., Ltd.
Mitsubishi Jisho Towa Community Co., Ltd.
Rockefeller Group, Inc.

Stock Exchange Listings:

Tokyo Stock Exchange and other major Japanese stock exchanges

Transfer Agent and Registrar:

Mitsubishi UFJ Trust and Banking Corporation

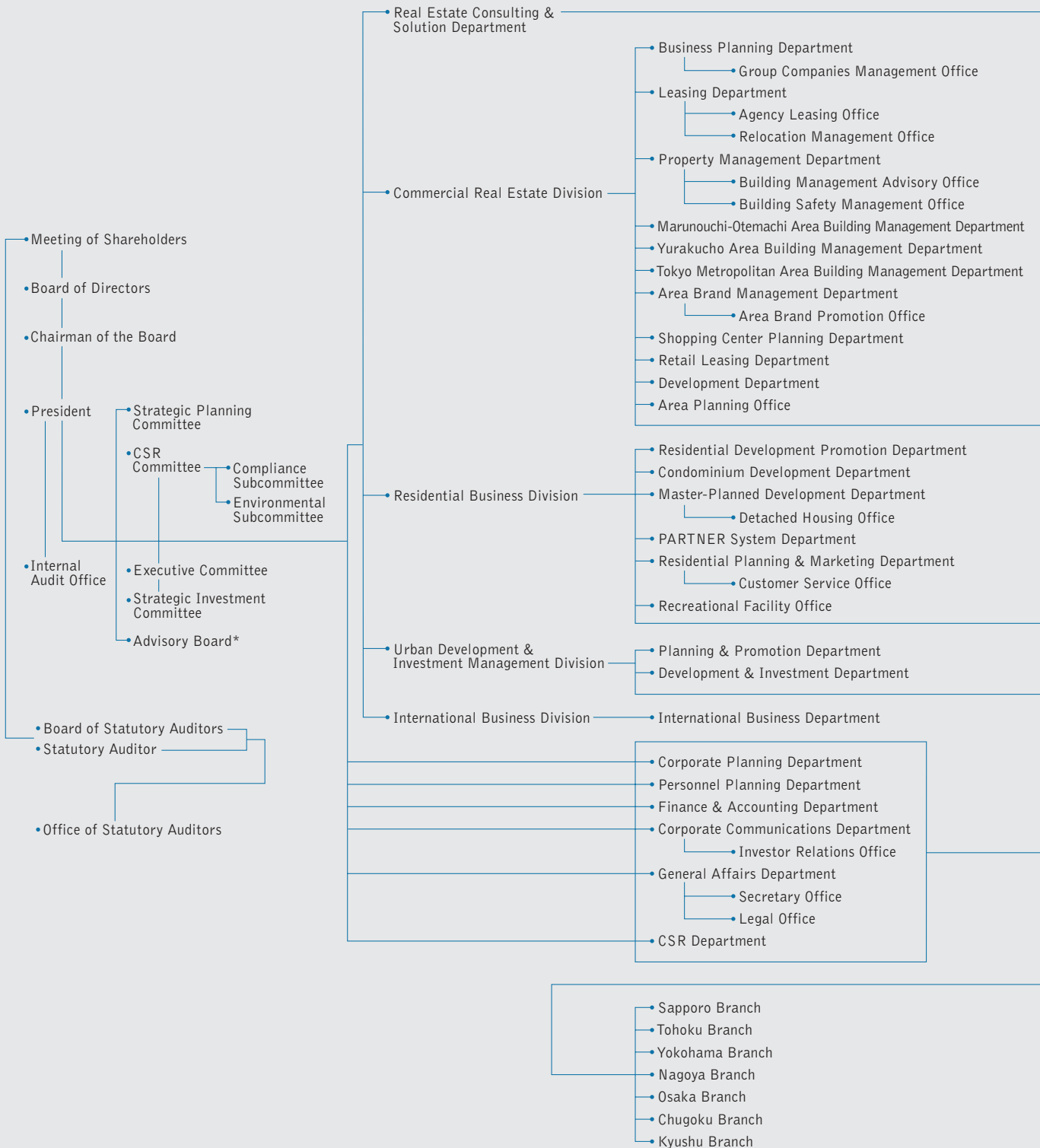
4-5, Marunouchi 1-chome, Chiyoda-ku, Tokyo 100-8212, Japan

Auditor:

Ernst & Young ShinNihon

(Data as of March 31, 2006, excluding Mitsubishi Jisho Towa Community Co., Ltd., which is current as of April 1, 2006)

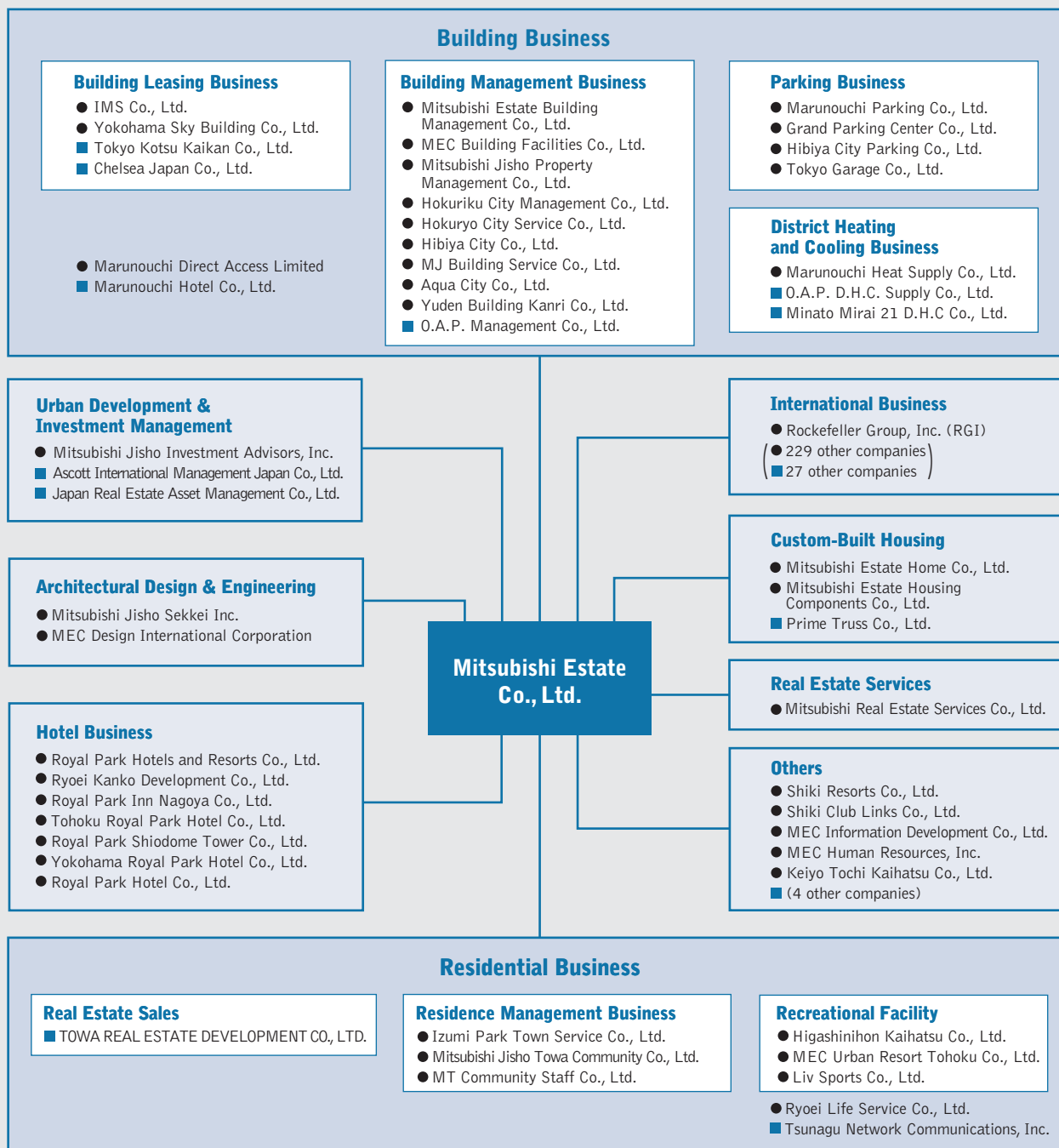
ORGANIZATION



* Advisory body comprising external members who are influential professionals.

(As of April 1, 2006)

mitsubishi estate group



● Consolidated Subsidiaries
 ■ Equity-Method Affiliates

(As of April 1, 2006)