

Mitsubishi Estate Corporate Data

Directors and Statutory Auditors

Chairman of the Board

Takeshi Fukuzawa

President and Chief Executive Officer

Keiji Kimura*

Director/Deputy President

Nobuyuki Iizuka*

Directors/Executive Vice Presidents

Takayuki Hara

Terutake Miyamoto*

Kazuo Odagawa

Hiroharu Koinuma

Satoshi Oyama*

Toshio Nagashima*

Hiroshi Danno*

Director/Executive Counsel

Shigeru Takagi

Senior Executive Officers

Takaya Endo

Seiichiro Suzuki

Mitsuo Iwai

Toyohisa Miyauchi

Masaaki Kono

Takao Yagihashi

Hiroyoshi Ito

Yutaka Yanagisawa

Executive Officers

Toshihide Yoshimura

Kazuo Takahashi

Yuzuru Shibagaki

Hiroshi Nakajima

Masao Ouchi

Hiroataka Sugiyama

Yasuo Fujiwara

Ichiro Watarai

Megumu Ono

Statutory Auditors

Eiji Tan

Kunihiro Inoue

Kenjiro Hata

Kazuya Okamoto

Toyoshi Nakano

*Representative Director

(as of June 29, 2005)

Corporate Information

Head Office:

Otemachi Building, 6-1, Otemachi 1-chome, Chiyoda-ku,

Tokyo 100-8133, Japan

Web site: <http://www.mec.co.jp>

Phone: (03) 3287-5100

Date of Establishment:

May 7, 1937

Paid-in Capital:

¥86,534 million

Number of Shares of Common Stock Issued:

1,299,185,054 shares

Number of Shareholders:

83,385 (excluding shareholders with less than 1,000 shares)

Major Shareholders:

	% of total
The Master Trust Bank of Japan, Ltd. (Trust Account)	4.54
Meiji Yasuda Life Insurance Company	4.42
Japan Trustee Services Bank, Ltd. (Trust Account)	4.22
State Street Bank and Trust Company 505103	4.03
The Bank of Tokyo-Mitsubishi, Limited	3.33
Tokio Marine & Nichido Fire Insurance Co., Ltd.	3.12
State Street Bank and Trust Company	2.53
The Chase Manhattan Bank, N.A. London, S.L. Omnibus Account	2.35
Taisei Corporation	2.25
Takenaka Corporation	2.17

Major Consolidated Subsidiaries:

Mitsubishi Real Estate Services Co., Ltd.
Mitsubishi Estate Home Co., Ltd.
Mitsubishi Jisho Sekkei Inc.
Yokohama Royal Park Hotel Co., Ltd.
Mitsubishi Estate Building Management Co., Ltd.
Marunouchi Heat Supply Co., Ltd.
Yokohama Sky Building Co., Ltd.
Royal Park Hotel Co., Ltd.
Towa Community Service Co., Ltd.
Rockefeller Group, Inc.

Stock Exchange Listings:

Tokyo Stock Exchange and other major Japanese stock exchanges

Transfer Agent and Registrar:

The Mitsubishi Trust and Banking Corporation

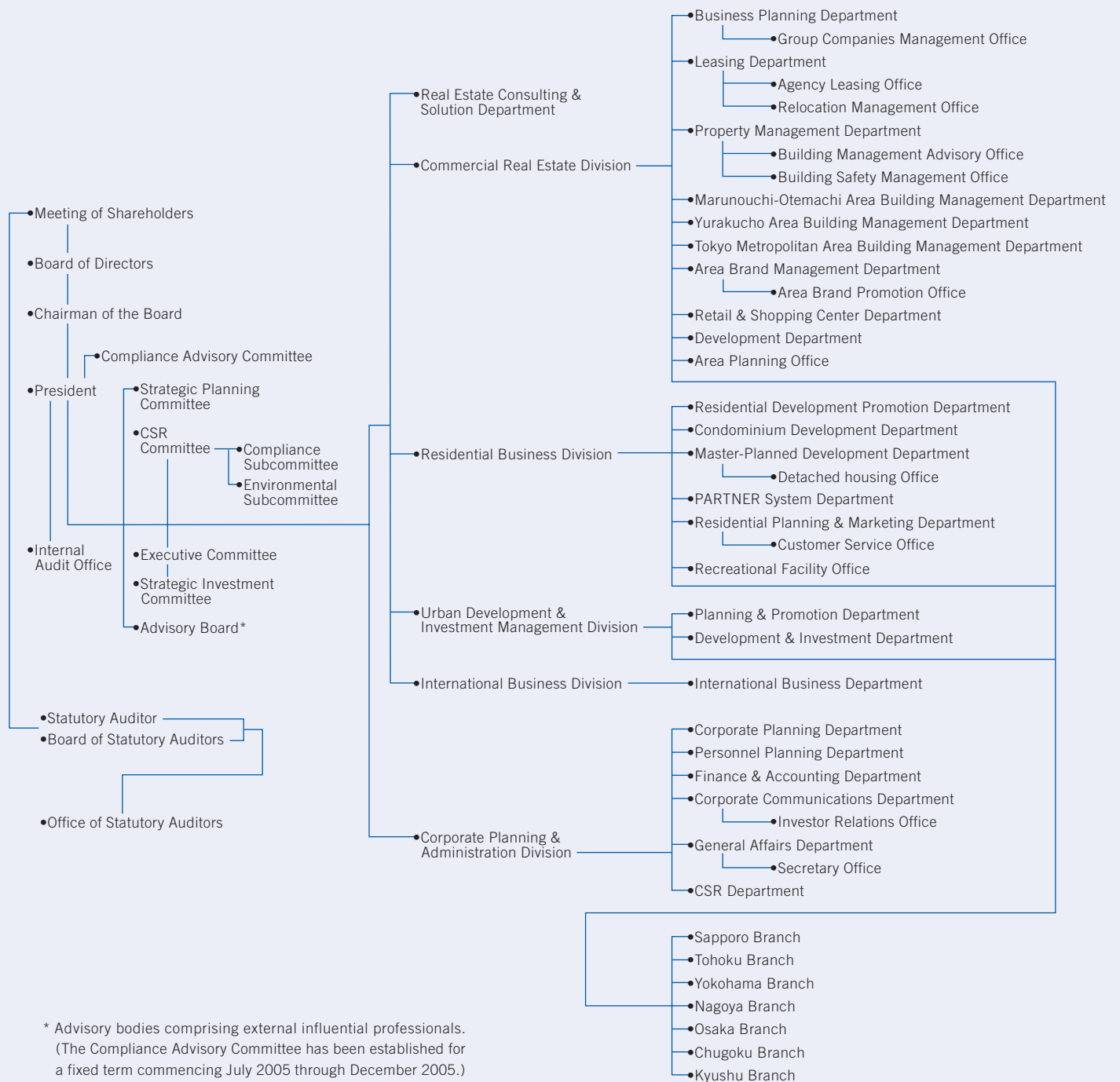
4-5, Marunouchi 1-chome, Chiyoda-ku, Tokyo 100-8212, Japan

Auditor:

Ernst & Young ShinNihon

(as of March 31, 2005)

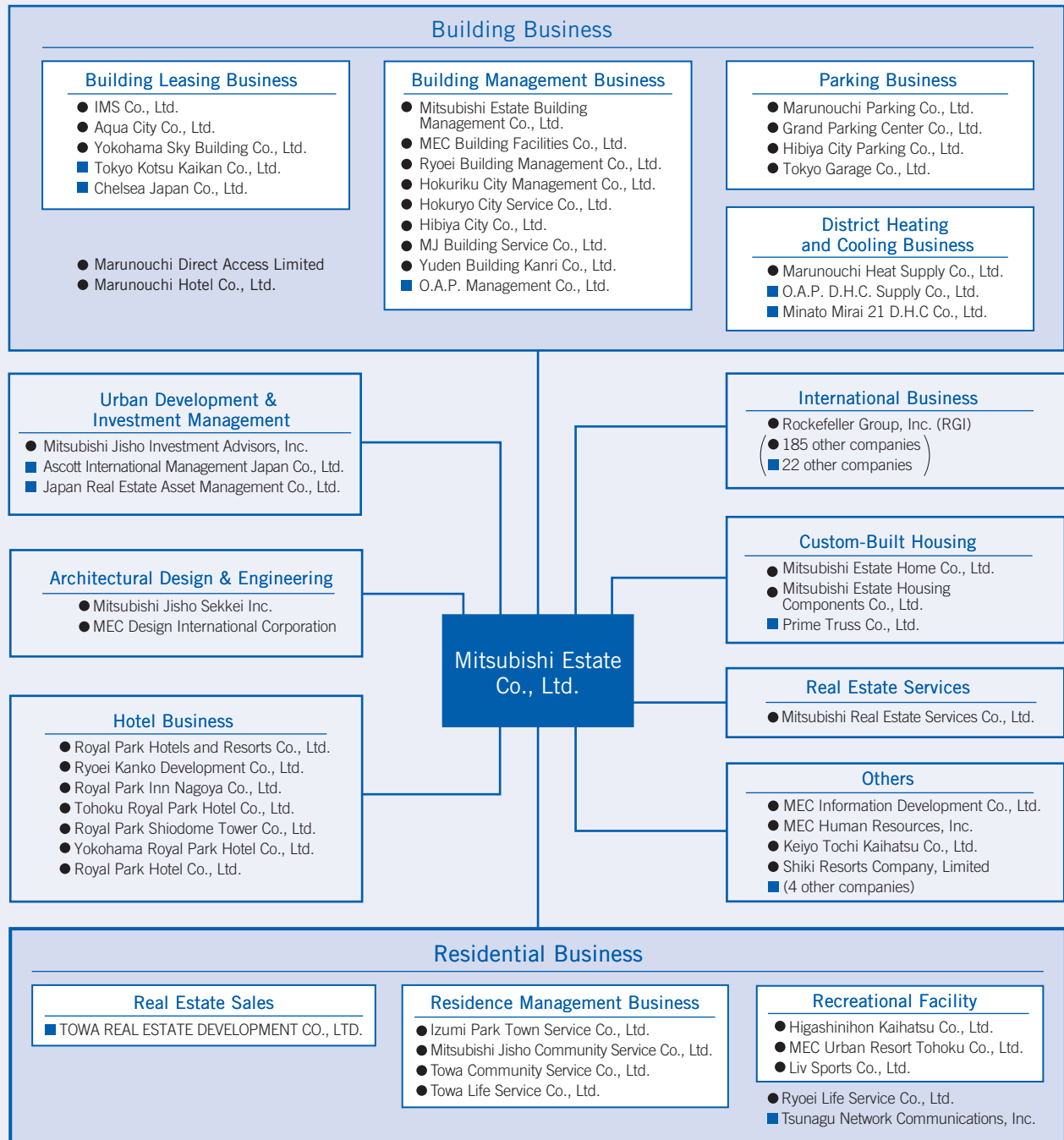
Organization



* Advisory bodies comprising external influential professionals.
(The Compliance Advisory Committee has been established for a fixed term commencing July 2005 through December 2005.)

(as of September 1, 2005)

Mitsubishi Estate Group



● Consolidated Subsidiaries
 ■ Equity-Method Affiliates

(as of June 29, 2005)