

MITSUBISHI ESTATE CORPORATE DATA

Directors and Statutory Auditors

Chairman of the Board

Takeshi Fukuzawa

President and Chief Executive Officer

Shigeru Takagi*

Director/Deputy President

Eiji Tan*

Directors/Executive Vice Presidents

Takayuki Hara

Yasuhiko Watanabe*

Atsushi Morimoto*

Terutake Miyamoto*

Kazuo Odagawa

Hiroharu Koinuma

Keiji Kimura*

Senior Executive Officers

Satoshi Oyama

Yasuto Suzuki

Takaya Endo

Seiichiro Suzuki

Nobuyuki Iizuka

Toshio Nagashima

Mitsuo Iwai

Executive Officers

Toshihide Yoshimura

Toyohisa Miyauchi

Masaaki Kono

Hiroshi Danno

Kazuo Takahashi

Yuzuru Shibagaki

Takao Yagihashi

Hiroyoshi Ito

Yutaka Yanagisawa

Hiroshi Nakajima

Masao Ouchi

Hiroataka Sugiyama

Yasuo Fujiwara

Ichiro Watarai

Statutory Auditors

Yasuo Satake

Kunihiro Inoue

Kenjiro Hata

Kazuya Okamoto

Toyoshi Nakano

*Representative Director

(as of June 29, 2004)

Corporate Information

Head Office:

Otemachi Building, 6-1, Otemachi 1-chome, Chiyoda-ku,

Tokyo 100-8133, Japan

Web site: <http://www.mec.co.jp>

Phone: (03) 3287-5100

Date of Establishment:

May 7, 1937

Paid-in Capital:

¥86,534 million

Number of Shares of Common Stock Issued:

1,299,185,054 shares

Number of Shareholders:

83,566 (excluding shareholders with less than 1,000 shares)

Major Shareholders:

	% of total
The Master Trust Bank of Japan, Ltd. (Trust Account)	5.79
Japan Trustee Services Bank, Ltd. (Trust Account)	5.42
State Street Bank and Trust Company	5.01
Meiji Yasuda Life Insurance Company	4.46
The Bank of Tokyo-Mitsubishi, Limited	3.36
The Tokio Marine and Fire Insurance Co., Ltd.	3.15
The Chase Manhattan Bank, N.A. London, S.L. Omnibus Account	3.15
Taisei Corporation	2.26
Mellon Bank Treaty Clients Omnibus	2.21
Takenaka Corporation	2.19

Major Consolidated Subsidiaries:

Mitsubishi Jisho Sekkei Inc.
Mitsubishi Real Estate Services Co., Ltd.
Mitsubishi Estate Home Co., Ltd.
Yokohama Royal Park Hotel Co., Ltd.
Aqua City Co., Ltd.
Marunouchi Heat Supply Co., Ltd.
Yokohama Sky Building Co., Ltd.
Royal Park Hotel Co., Ltd.
Rockefeller Group, Inc.

Stock Exchange Listings:

Tokyo Stock Exchange and other major Japanese stock exchanges

Transfer Agent and Registrar:

The Mitsubishi Trust and Banking Corporation

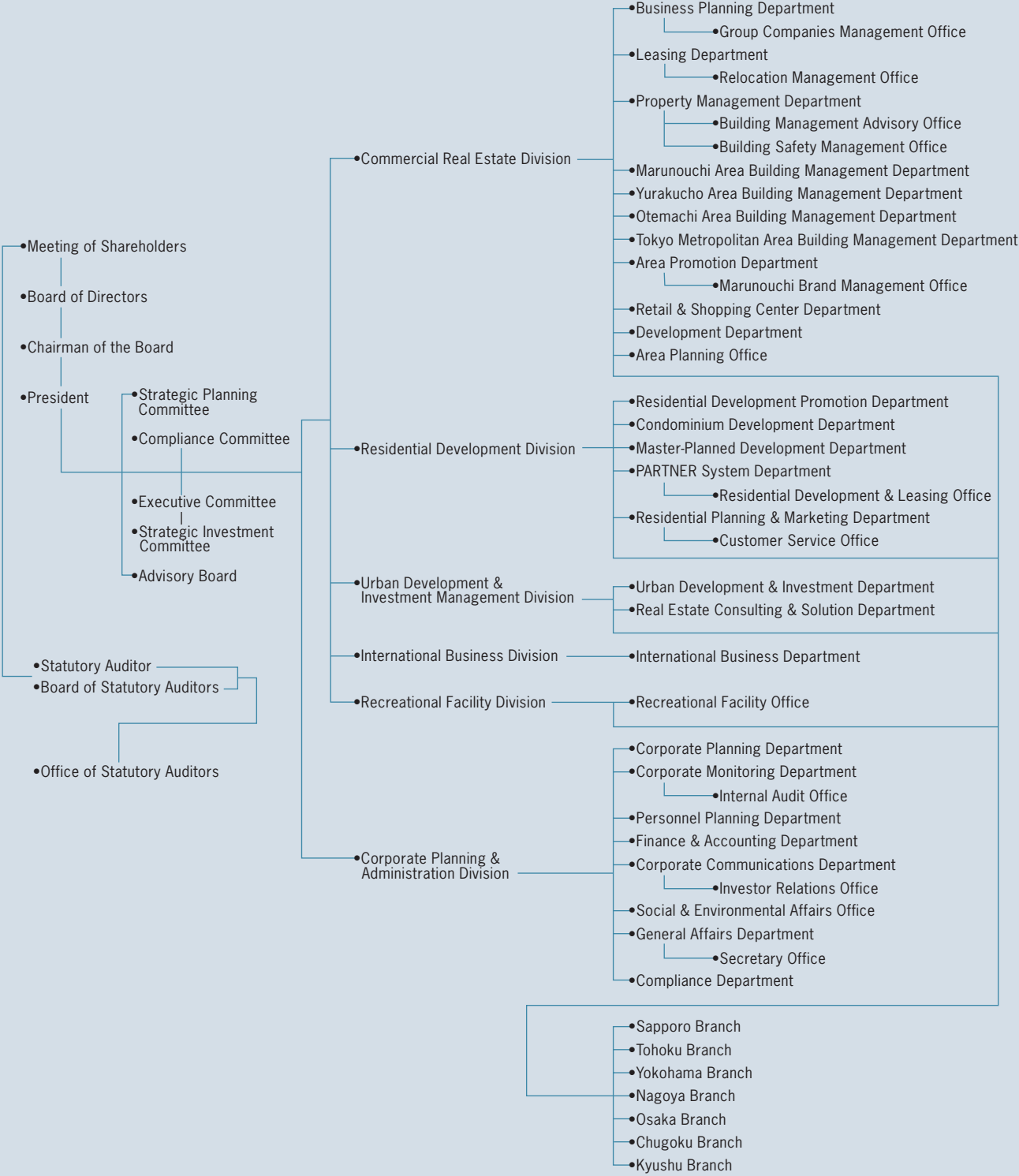
4-5, Marunouchi 1-chome, Chiyoda-ku, Tokyo 100-8212, Japan

Auditor:

Toyo & Co.

(as of March 31, 2004)

Organization



(as of July 1, 2004)

Mitsubishi Estate Group

