

## Directors and Statutory Auditors

### Chairman of the Board

Takeshi Fukuzawa

### President and Chief Executive Officer

Shigeru Takagi\*

### Director/Deputy President

Eiji Tan\*

### Directors/Executive Vice Presidents

Katsuhisa Shimada

Takayuki Hara\*

Yasuhiko Watanabe\*

Atsushi Morimoto\*

Terutake Miyamoto\*

### Senior Executive Officers

Masahiro Yamanaka

Yutaka Nakamura

Satoshi Oyama

Kazuo Odagawa

Yasuto Suzuki

Hajime Ito

Hiroharu Koinuma

Keiji Kimura

### Executive Officers

Hiroataka Kanki

Takaya Endo

Seiichiro Suzuki

Nobuyuki Iizuka

Toshio Nagashima

Mitsuo Iwai

Toshihide Yoshimura

Masaaki Kono

Toyohisa Miyauchi

Hiroshi Danno

Kazuo Takahashi

Yuzuru Shibagaki

Takao Yagihashi

Hiroyoshi Ito

Yutaka Yanagisawa

### Statutory Auditors

Yasuo Satake

Kunihiro Inoue

Terumichi Tsuchida

Kazuya Okamoto

Toyoshi Nakano

\*Representative Director

(as of June 27, 2003)

## Corporate Information

### Head Office:

Otemachi Building, 6-1, Otemachi 1-chome, Chiyoda-ku,

Tokyo 100-8133, Japan

Web site: <http://www.mec.co.jp>

Phone: (03) 3287-5100

### Date of Establishment:

May 7, 1937

### Paid-in Capital:

¥86,534 million

### Number of Shares of Common Stock Issued:

1,299,185,054 shares

### Number of Shareholders:

90,117 (excluding shareholders with less than 1,000 shares)

### Major Shareholders:

	% of total
The Master Trust Bank of Japan, Ltd. (Trust Account)	6.08
Japan Trustee Services Bank, Ltd. (Trust Account)	5.97
The Meiji Mutual Life Insurance Company	4.53
The Bank of Tokyo-Mitsubishi, Limited	3.61
The Tokio Marine and Fire Insurance Co., Ltd.	3.15
Obayashi Corporation	2.33
Taisei Corporation	2.26
Takenaka Corporation	2.19
The Mitsubishi Trust and Banking Corporation	2.11
The Chase Manhattan Bank, N.A. London, S.L. Omnibus Account	2.11

### Major Consolidated Subsidiaries:

Mitsubishi Jisho Sekkei Inc.  
 Mitsubishi Real Estate Services Co., Ltd.  
 Mitsubishi Estate Home Co., Ltd.  
 Yokohama Royal Park Hotel Co., Ltd.  
 Aqua City Co., Ltd.  
 Marunouchi Heat Supply Co., Ltd.  
 Yokohama Sky Building Co., Ltd.  
 Royal Park Hotel Co., Ltd.  
 Rockefeller Group, Inc.

### Stock Exchange Listings:

Tokyo Stock Exchange and other major Japanese stock exchanges

### Transfer Agent and Registrar:

The Mitsubishi Trust and Banking Corporation

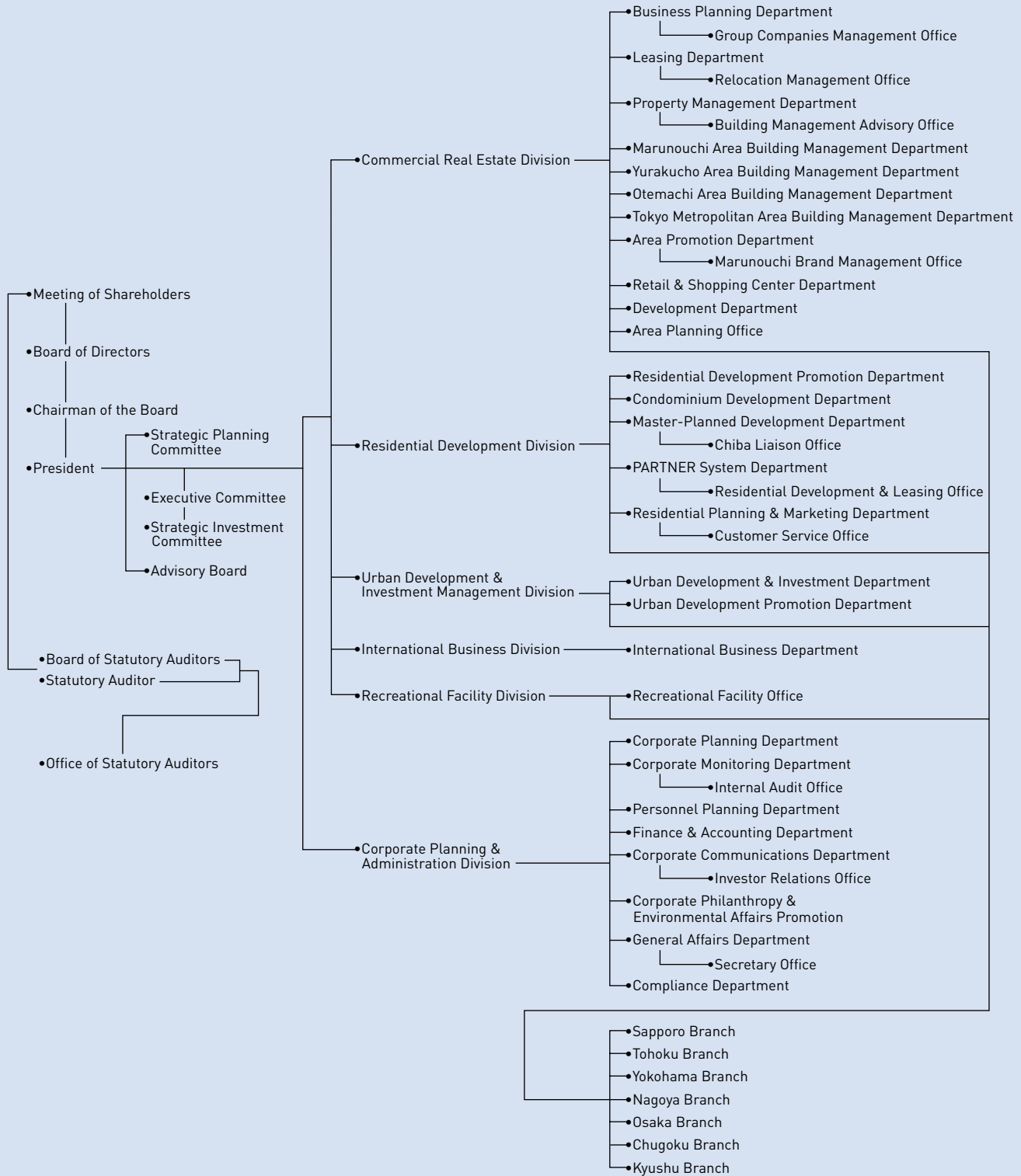
4-5, Marunouchi 1-chome, Chiyoda-ku, Tokyo 100-8212, Japan

### Auditor:

Toyo & Co.

(as of March 31, 2003)

# Organization



(as of July 1, 2003)