

Mitsubishi Estate Corporate Data

Directors and Statutory Auditors

President

Takeshi Fukuzawa*

Executive Vice President

Shigeru Takagi*

Senior Managing Directors

Hiroshi Baba*

Hirofumi Okuizumi*

Katsuhisa Shimada*

Takayuki Hara*

Eiji Tan*

Shigeo Shimizu*

Managing Directors

Kaoru Kohno

Atsushi Morimoto

Yutaka Nakamura

Mikio Aoki

Terutake Miyamoto

Directors

Satoru Kishi

Tadataka Uchida

Taketo Yamazaki

Masahiro Yamanaka

Kenji Ohnishi

Iwao Makino

Toshiaki Hara

Satoshi Oyama

Kazuo Odagawa

Yasuto Suzuki

Hajime Ito

Hiroharu Koinuma

Hiroataka Kanki

Keiji Kimura

Statutory Auditors

Yasuo Satake

Yasuhiko Watanabe

Terumichi Tsuchida

Hiroshi Hayashi

*Representative Director

(as of June 29, 2000)

Corporate Information

Head Office:

Tokyo Building, 7-3, Marunouchi 2-chome, Chiyoda-ku,

Tokyo 100-8330, Japan

Telex: MECDDIA J22174

Internet Home Page: <http://www.mec.co.jp>

Phone: (03) 3287-5100

Date of Establishment:

May 7, 1937

Paid-in Capital:

¥86,534 million

Number of Shares of Common Stock Issued:

1,299,185,054 shares

Number of Shareholders:

99,879 (excluding shareholders with less than 1,000 shares)

Major Shareholders:

	% of total
The Bank of Tokyo-Mitsubishi, Limited	4.76
The Meiji Mutual Life Insurance Company	4.50
Taisei Corporation	3.72
The Mitsubishi Trust and Banking Corporation	3.44
The Tokio Marine and Fire Insurance Co., Ltd.	3.29
The Mitsubishi Trust and Banking Corporation (Trust Account)	2.52
The Sumitomo Trust & Banking Co., Ltd. (Trust Account)	2.43
Shimizu Corporation	2.39
Obayashi Corporation	2.31
Takenaka Corporation	2.17

Major Consolidated Subsidiaries:

Mitsubishi Real Estate Services Co., Ltd.

Mitsubishi Estate Home Co., Ltd.

Yokohama Royal Park Hotel Co., Ltd.

Aqua City Co., Ltd.

Marunouchi Heat Supply Co., Ltd.

Yokohama Sky Building Co., Ltd.

Royal Park Hotel Co., Ltd.

Rockefeller Group, Inc.

Stock Exchange Listings:

Tokyo Stock Exchange and other major Japanese stock exchanges

Transfer Agent and Registrar:

The Mitsubishi Trust and Banking Corporation

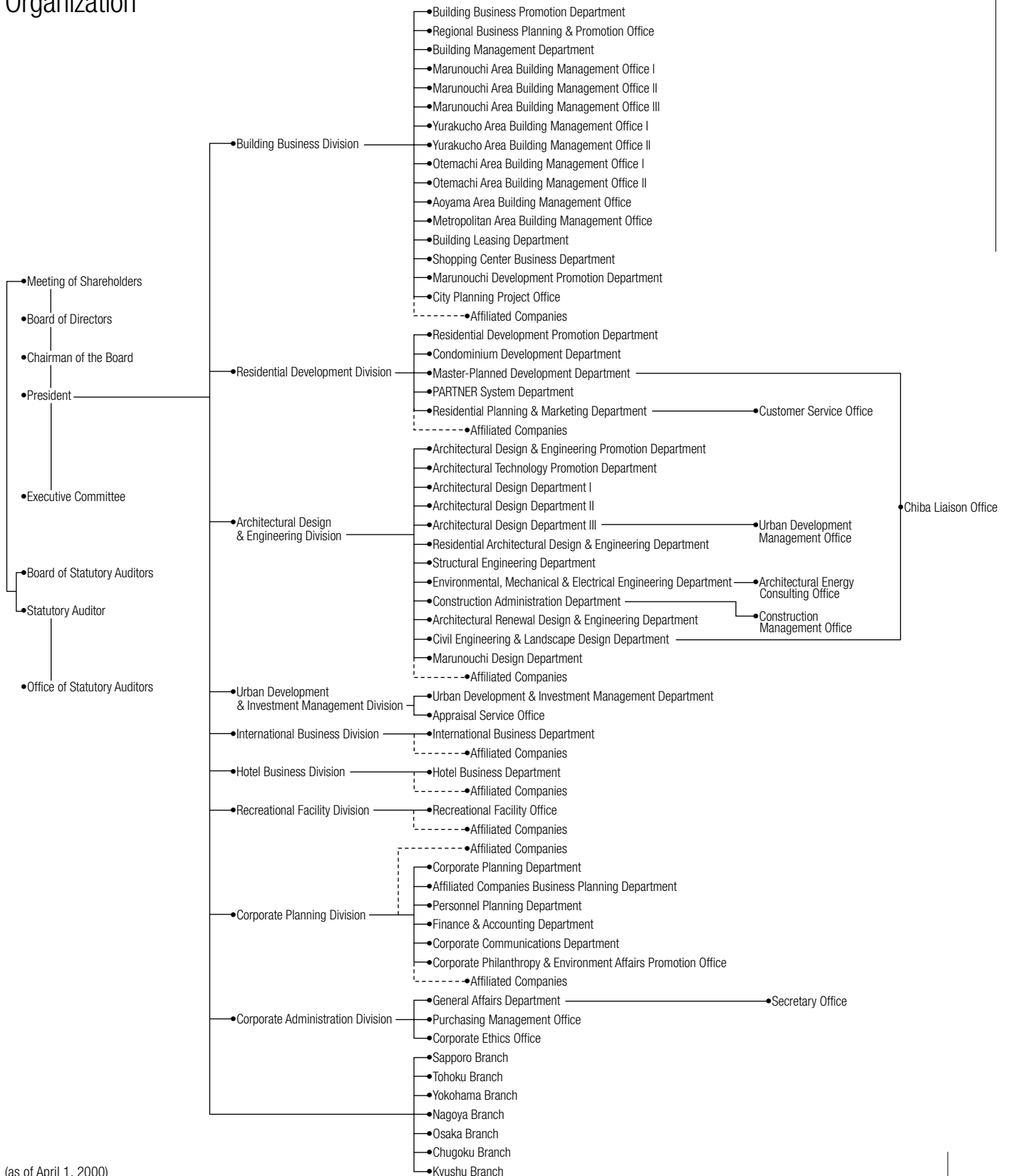
11-1, Nagatacho 2-chome, Chiyoda-ku, Tokyo 100-8212, Japan

Auditor:

Century Ota Showa & Co.

(as of March 31, 2000)

Organization



(as of April 1, 2000)