

February 15, 2018

To whom it may concern:

Company name: Mitsubishi Estate Co., Ltd.
Representative: Junichi Yoshida
President and Chief Executive Officer
Securities code: 8802
Contact: Masato Kawasaki
General Manager
Corporate Communications Department
Telephone: +81-3-3287-5200

Notice Concerning Changes in Organization, Changes in Representative Corporate Executive Officers and Other Personnel

Mitsubishi Estate Co., Ltd. (hereafter “Mitsubishi Estate” or “the Company”) hereby announces that it made decisions on the following organizational changes: changes in Representative Corporate Executive Officers and other personnel as well as candidates for Directors to be submitted at the Ordinary General Meeting of Shareholders scheduled to be held in the latter half of June 2018, and candidates for committee members of the Nominating Committee, Audit Committee and Remuneration Committee to be submitted at the Board of Directors’ Meeting which will be held after the Ordinary General Meeting of Shareholders.

I. Organizational Changes

[Effective as of April 1, 2018]

Mitsubishi Estate will review the size of current business groups and make organizational changes within business groups, intending to reinforce its endeavors in business model innovation in order to achieve further growth in the future set forth in its medium-term management plan.

1. Office Building Group

- (1) New establishment of xTECH Leasing and Promotion Department (cross-tech leasing and promotion department)

The Company will newly establish the xTECH Leasing and Promotion Department as a department to head leasing activities specialized for domestic and overseas startups, growing companies, etc. and related facilities operation and management, in order to promote and enhance attracting such companies in various areas including the Marunouchi area, which serves as a base for its businesses. In addition, some functions of the Office Leasing and Tenant Relations Department as well as some functions of the Tenant Business Development Office in the Area Brand Management Department will be transferred to the xTECH Leasing and Promotion Department, and the Tenant Business Development Office will be abolished.

2. Hotel & Airport Business Group

- (1) New establishment of Hotel & Airport Business Group

The Company will integrate its businesses including the hotel development business under the supervision of the Lifestyle Property Business Group, resort hotel development business under the supervision of the Business Creation Department, hotel operation business under the supervision of the

Hotel Business Group and airport operation business under the supervision of the Airport Project Promotion Office in the Business Creation Department, and will newly establish the Hotel & Airport Business Group as a business group to head such, as well as abolish the Airport Project Promotion Office. The intention is to expand and accelerate the hotel development business and hotel operation business which address vigorous accommodation demand against the backdrop of an increase in foreign visitors to Japan as a strategic growth field, while enhancing endeavors for the airport operation business, in which the Company is striving to participate.

(2) New establishment of Hotel Business Department and Airport Business Department

The Company will newly establish the Hotel Business Department and the Airport Business Department within the Hotel & Airport Business Group, which it will newly establish.

3. Renaming of Nagoya Branch to Chubu Branch

- (1) The Nagoya Branch will be renamed as Chubu Branch, eyeing expansion of business opportunities in the Chubu area which the Nagoya Branch administers.

II. Change in Representative Directors

1. Representative Corporate Executive Officers, whose Duties will be Changed

(Effective as of April 1, 2018)

Name	Title and Duties	
	New	Former
Junichi Tanisawa	Director, Representative Corporate Executive Officer, Deputy President, Assistant to President, In charge of Office Building Development Department 1, Office Building Development Department 2, Marunouchi Development Department, Tokiwabashi Development Department and Urban Development Promotion Department	Director, Representative Corporate Executive Officer, Executive Vice President In charge of Corporate Planning Department, Assistant to Business Creation Department
Tetsuji Arimori	Representative Corporate Executive Officer, Executive Vice President,, In charge of Corporate Planning Department, Assistant to Business Creation Department	Representative Corporate Executive Officer, Executive Vice President, In charge of Investment Management Business Department

2. Resigning Representative Corporate Executive Officers

(Effective as of March 31, 2018)

Name	Title and Duties	
	New	Former
Jo Kato	Director	Director, Representative Corporate Executive Officer, Deputy President, Assistant to President, In charge of International Business Planning Department
Naoto Aiba	Executive Vice President, President mission	Representative Corporate Executive Officer, Executive Vice President, In charge of Office Building Development Department 1, Office Building Development Department 2, Marunouchi Development Department, Tokiwabashi Development Department, Urban Development Promotion Department

III. Change in Corporate Executive Officers

1. Newly Appointed Corporate Executive Officers

(Effective as of April 1, 2018)

Name	Title and Duties	
	New	Former
Futoshi Chiba	Senior Executive Officer, In charge of Office Building Planning Department, Office Building Management Department, Area Brand Management Department, Museum Management Office	Group Executive Officer, Representative Director, President & Chief Executive Officer of Mitsubishi Jisho Property Management Co., Ltd.
Keiji Takano	Senior Executive Officer, In charge of Investment Management Business Department	Executive Officer, General Manager of Investment Management Business Department
Atsushi Nakajima	Senior Executive Officer, In charge of International Business Planning Department	Executive Officer, General Manager of International Business Planning Department
Yuji Fujioka	Senior Executive Officer, In charge of Hotel Business Department, Airport Business Department	Group Executive Officer, President & Chief Executive Officer of MEC Urban Resort Tohoku Co., Ltd. President & Chief Executive Officer of Tohoku Royal Park Hotel Co., Ltd.

2. Corporate Executive Officers, whose Duties will be Changed

(Effective as of April 1, 2018)

Name	Title and Duties	
	New	Former
Kenichi Iwata	Executive Vice President, In charge of Kansai Branch	Executive Vice President, In charge of Kansai Branch, General Manager of Kansai Branch
Tetsuo Yuasa	Senior Executive Officer, In charge of Office Leasing and Tenant Relations Department, xTECH Leasing and Promotion Department	Senior Executive Officer, In charge of Office Building Planning Department, Office Building Management Department, Area Brand Management Department, Museum Management Office, Office Leasing and Tenant Relations Department

IV. Change in Executive Officers

(Effective as of April 1, 2018)

Name	Title and Duties	
	New	Former
Ikuo Ono	Executive Officer, General Manager of Chubu Branch	Executive Officer, General Manager of Nagoya Branch
Toru Kimura	Executive Officer, General Manager of Kansai Branch	Executive Officer, General Manager of Office Building Planning Department

V. Change in Group Executive Officers

(Effective as of April 1, 2018)

Name	Title and Duties	
	New	Former
Yutaro Yotsuzuka	Group Executive Officer, Managing Director of Mitsubishi Estate Asia Ltd.	Executive Officer, General Manager of Finance & Accounting Department
Naoki Umeda	Group Executive Officer, Representative Director, President & Chief Executive Officer of Japan Real Estate Asset Management Co., Ltd.	Representative Director, President & Chief Executive Officer of Japan Real Estate Asset Management Co., Ltd.
Ryozo Kawabata	Group Executive Officer, Representative Director, President & Chief Executive Officer of Mitsubishi Jisho Property Management Co., Ltd.	General Manager of Office Leasing and Tenant Relations Department

VI. Change in Directors

1. Candidates for Newly Appointed Directors

(Effective as of the latter half of June 2018)

Name	Title and Duties	
	New	Former
Tetsuji Arimori	Director, Representative Corporate Executive Officer, Executive Vice President In charge of Corporate Planning Department, Assistant to Business Creation Department	Representative Corporate Executive Officer, Executive Vice President, In charge of Corporate Planning Department, Assistant to Business Creation Department (Effective as of April 1, 2018)
Tetsuo Narikawa	Director (Outside Director)	(Former Governor of NIPPON STEEL KOWA REAL ESTATE CO., LTD)

2. Resigning Directors

(Effective as of the end of June 2018)

Name	Title and Duties	
	New	Former
Yutaka Yanagisawa	Resign	Director
Isao Matsuhashi	Resign	Director

VII. Candidates for Directors

(Effective as of the latter half of June 2018)

Hiroataka Sugiyama, Chairman of the Board (reappointed)

Junichi Yoshida, Director (reappointed)

Junichi Tanisawa, Director (reappointed)

Tetsuji Arimori, Director (newly appointed)

Hiroshi Katayama, Director (reappointed)

Noboru Nishigai, Director (reappointed)

Jo Kato, Director (reappointed)

Toru Okusa, Director (reappointed)

Shin Ebihara, Outside Director (reappointed)

Shu Tomioka, Outside Director (reappointed)

Tetsuo Narikawa, Outside Director (newly appointed)

Masaaki Shirakawa, Outside Director (reappointed)

Shin Nagase, Outside Director (reappointed)

Setsuko Egami, Outside Director (reappointed)

Iwao Taka, Outside Director (reappointed)

VIII. Members of Committees

(Effective as of April 1, 2018)

(1) Nominating Committee

Isao Matsubishi, Outside Director (committee chairman)
Hirotaka Sugiyama, Chairman of the Board
Noboru Nishigai, Director
Masaaki Shirakawa, Outside Director
Setsuko Egami, Outside Director

(2) Audit Committee

Yutaka Yanagisawa, Director (committee chairman)
Toru Okusa, Director
Shu Tomioka, Outside Director
Shin Nagase, Outside Director
Iwao Taka, Outside Director

(3) Remuneration Committee

Shin Ebihara, Outside Director (committee chairperson)
Masaaki Shirakawa, Outside Director
Setsuko Egami, Outside Director

*Junichi Tanisawa, Director and Noboru Nishigai, Director will resign, effective as of March 31, 2018.

IX. Candidates for Members of Committees

(Effective as of the latter half of June 2018)

(1) Nominating Committee

Tetsuo Narikawa, Outside Director (committee chairperson)
Hirotaka Sugiyama, Chairman of the Board
Shin Ebihara, Outside Director
Masaaki Shirakawa, Outside Director
Setsuko Egami, Outside Director

(2) Audit Committee

Jo Kato, Director (committee chairperson)
Toru Okusa, Director
Shu Tomioka, Outside Director
Shin Nagase, Outside Director
Iwao Taka, Outside Director

(3) Remuneration Committee

Shin Ebihara, Outside Director (committee chairperson)
Tetsuo Narikawa, Outside Director
Masaaki Shirakawa, Outside Director
Setsuko Egami, Outside Director

X. Change in General Managers (Effective as of April 1, 2018)

Name	Duties	
	New	Former
Katsunori Tanaka	General Manager of Business Development, Consulting & Solutions Planning Department General Manager of Business Development, Consulting & Solutions Department 2	General Manager of Business Development, Consulting & Solutions Planning Department
Haruhiko Araki	General Manager of Office Building Planning Department	General Manager of Marunouchi Development Department
Satoshi Iwata	General Manager of Office Building Development Department 1	Mitsubishi Jisho Investment Advisors, Inc.
Homare Yoshida	General Manager of Marunouchi Development Department	Corporate Planning Department
Shuichi Shimizu	General Manager of Office Leasing and Tenant Relations Department	General Manager of Office Building Development Department 1
Hiroki Ito	General Manager of xTECH Leasing and Promotion Department	Mitsubishi Jisho Property Management Co., Ltd.
Tetsuya Takahashi	General Manager of Retail Property Development Department	Business Development, Consulting & Solutions Department 1
Tetsuya Masuda	General Manager of International Business Planning Department	Co-President and Chief Executive Officer of Rockefeller Group International, Inc.
Shojiro Kojima	General Manager of Investment Management Business Department	Managing Director of Mitsubishi Estate Asia Ltd.
Tomohisa Suzuki	General Manager of Hotel Business Department	Business Creation Department
Yasuyuki Sakaguchi	General Manager of Airport Business Department	General Manager of Business Creation Department
Kazuyuki Inoue	General Manager of Finance & Accounting Department	Lifestyle Property Business Planning Department
Kyota Kobayashi	General Manager of Business Creation Department	Corporate Planning Department
Kenichi Hattori	General Manager of Chushikoku Branch	Representative Director, President & Chief Executive Officer of MEC Human Resources, Inc.
Kazufumi Hara	President & Chief Executive Officer of MEC Urban Resort Tohoku Co., Ltd. President & Chief Executive Officer of Tohoku Royal Park Hotel Co., Ltd.	Deputy President of Mitsubishi Real Estate Services Co., Ltd.
Tomoaki Itami	Ryoei Life Service Co., Ltd.	General Manager of Chushikoku Branch
Yutaka Hayashi	Deputy President and Representative Corporate Executive Officer of Yokohama Royal Park Hotel Co., Ltd.	General Manager of Business Development, Consulting & Solutions Department 2
Hironobu Kagino	Executive Officer, Mitsubishi Real Estate Services Co., Ltd.	General Manager of Retail Property Development Department
Masahiko Aikawa	Representative Director, President & Chief Executive Officer of MEC Human Resources, Inc.	Representative Director, President & Chief Executive Officer of Ryoei Life Service Co., Ltd.

(Reference) Officials as of April 1, 2018

Directors

Title	Name
Chairman of the Board	Hiroataka Sugiyama
Director	Junichi Yoshida
Director	Junichi Tanisawa
Director	Hiroshi Katayama
Director	Noboru Nishigai,
Director	Jo Kato
Director	Yutaka Yanagisawa
Director	Toru Okusa
Director	Isao Matsubishi
Director	Shin Ebihara
Director	Shu Tomioka
Director	Masaaki Shirakawa
Director	Shin Nagase
Director	Setsuko Egami
Director	Iwao Taka

Representative Corporate Executive Officers and Corporate Executive Officers

Title	Name	Duties
Representative Corporate Executive Officer, President & Chief Executive Officer	Junichi Yoshida	
Representative Corporate Executive Officer, Deputy President	Junichi Tanisawa	Assistant to President, In charge of Office Building Development Department 1, Office Building Development Department 2, Marunouchi Development Department, Tokiwabashi Development Department and Urban Development Promotion Department
Executive Vice President	Kenichi Iwata	In charge of Kansai Branch
Representative Corporate Executive Officer, Executive Vice President	Atsuo Kyono	In charge of Business Development, Consulting & Solutions Planning Department, Business Development, Consulting & Solutions Department 1, Business Development, Consulting & Solutions Department 2 and Business Development, Consulting & Solutions Department 3
Representative Corporate Executive Officer, Executive Vice President	Tetsuji Arimori	In charge of Corporate Planning Department, Assistant to Business Creation Department
Senior Executive Officer	Tetsuo Yuasa	In charge of Office Leasing and Tenant Relations Department, xTECH Leasing and Promotion Department
Senior Executive Officer	Hiroshi Katayama	In charge of Finance & Accounting Department, Corporate Communications Department
Senior Executive Officer	Futoshi Chiba	In charge of Office Building Planning Department, Office Building Management Department, Area Brand Management Department, Museum Management Office
Senior Executive Officer	Noboru Nishigai	In charge of Human Resources Department, General Affairs Department, Legal & Compliance Department, CSR & Environmental Sustainability Department, Compliance, Risk Management and Environment/Disaster Prevention
Senior Executive Officer	Hisashi Komada	In charge of Residential Business Planning Department
Senior Executive Officer	Kenji Hosokane	In charge of Lifestyle Property Business Planning Department, Retail Property Management Department, Retail Property Development Department, Retail Property Leasing Department, Logistics Facilities Development Department
Senior Executive Officer	Keiji Takano	In charge of Investment Management Business Department
Senior Executive Officer	Atsushi Nakajima	In charge of International Business Planning Department
Senior Executive Officer	Yuji Fujioka	In charge of Hotel Business Department, Airport Business Department
Executive Vice President	Naoto Aiba	President mission
Executive Officer	Ikuo Ono	General Manager of Chubu Branch
Executive Officer	Masaki Yamagishi	General Manager of Lifestyle Property Business Planning Department
Executive Officer	Toru Kimura	General Manager of Kansai Branch

Group Executive Officers

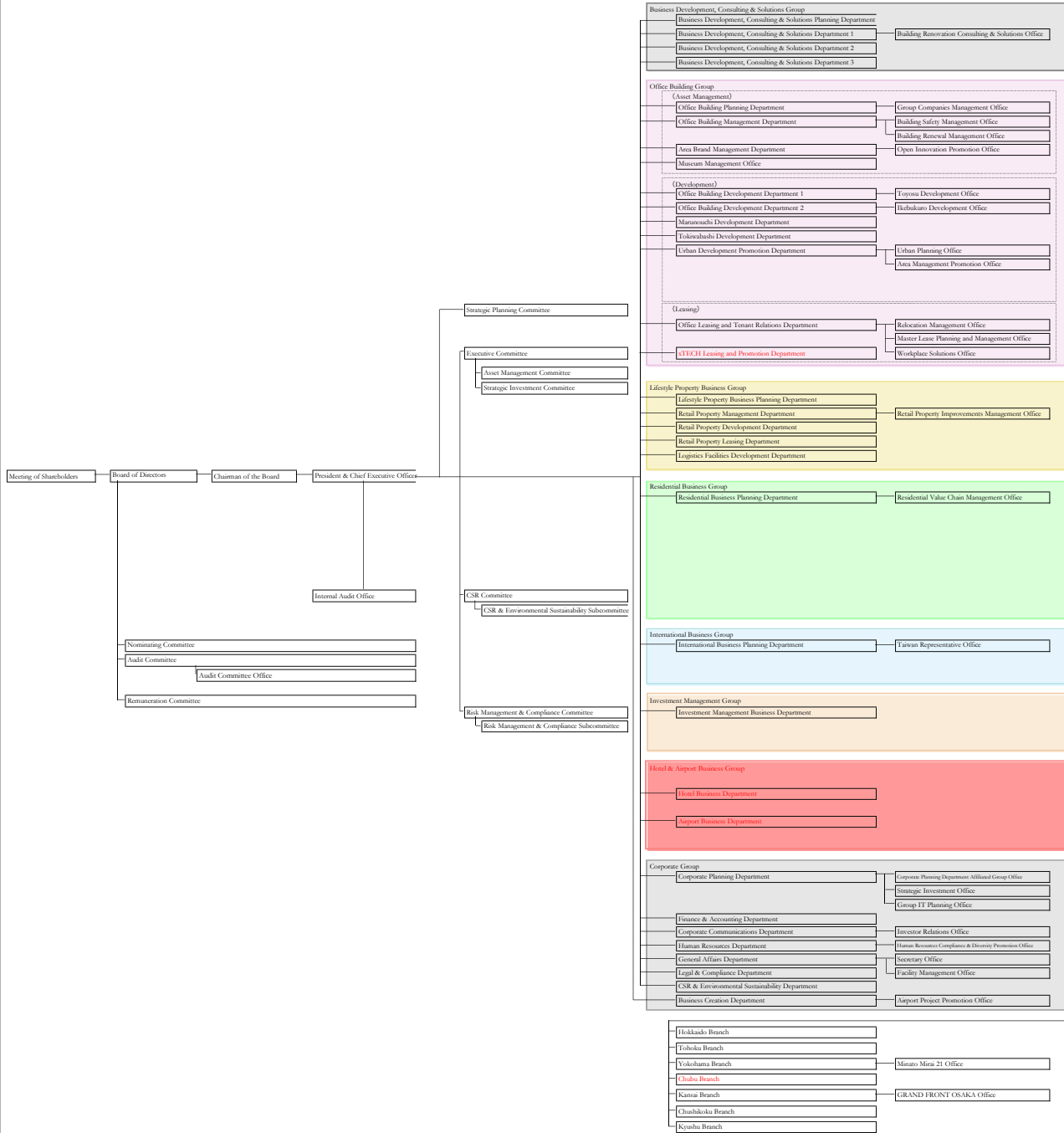
Title	Name	Duties
Group Executive Officer	Soichiro Hayashi	President & Chief Executive Officer of Mitsubishi Jisho Sekkei Inc.
Group Executive Officer	Hidemi Waki	Representative Director, President & Chief Executive Officer of Mitsubishi Jisho Residence Co., Ltd.
Group Executive Officer	Yutaka Tajima	President & Chief Executive Officer of Mitsubishi Real Estate Services Co., Ltd.
Group Executive Officer	Akinori Nakajo	President & Chief Executive Officer of Mitsubishi Jisho Investment Advisors, Inc.
Group Executive Officer	Akihiko Watanabe	Representative Director & Executive Vice President of Mitsubishi Jisho Sekkei Inc.
Group Executive Officer	Bunroku Naganuma	Representative Director & Executive Vice President of Mitsubishi Jisho Sekkei Inc.
Group Executive Officer	Masaharu Miyajima	Director & Executive Vice President of Mitsubishi Jisho Residence Co., Ltd.
Group Executive Officer	Tetsuya Okusa	Director & Senior Executive Officer of Mitsubishi Jisho Sekkei Inc.
Group Executive Officer	Yutaro Yotsuzuka	Managing Director of Mitsubishi Estate Asia Ltd.
Group Executive Officer	Nobuhiro Okumoto	Director & Senior Managing Executive Officer of Mitsubishi Jisho Residence Co., Ltd.
Group Executive Officer	Naoki Umeda	Representative Director, President & Chief Executive Officer of Japan Real Estate Asset Management Co., Ltd.
Group Executive Officer	Ryozo Kawabata	Representative Director, President & Chief Executive Officer of Mitsubishi Jisho Property Management Co., Ltd.

(Reference) Officials as of June 1, 2018

Directors

Title	Name
Chairman of the Board	Hiroataka Sugiyama
Director	Junichi Yoshida
Director	Junichi Tanisawa
Director	Tetsuji Arimori
Director	Hiroshi Katayama
Director	Noboru Nishigai
Director	Jo Kato
Director	Toru Okusa
Director	Shin Ebihara
Director	Shu Tomioka
Director	Tetsuo Narikawa
Director	Masaaki Shirakawa
Director	Shin Nagase
Director	Setsuko Egami
Director	Iwao Taka

Mitsubishi Estate Co., Ltd.



Group Companies

Legend
 ■ Consolidated Subsidiaries
 □ Equity method affiliated companies
 * Outside the scope of consolidation

